

on  
na  
BY PREMIER



SAY HELLO TO ACTIVE CARE WEAR





# SAY HELLO

## TO A NEW GENERATION OF SCRUBS

The workplace is changing. Forget cold and clinical. Health and beauty is a dynamic, fluid and amazingly technical industry and we think the uniforms you wear should be too. So, we've put our heart and soul into creating the perfect range of uniforms designed for today's health and beauty professionals.

And we know you're going to love the results.

Think activewear meets professional uniform. Technical fabrics engineered with super 4-way stretch. Tunics and pants designed for comfort and compliments.

Breathable base layers that feel like a second skin. All in a range of team colours that are anything but dull, so you can make light work of the toughest days.

Because when you care for people 24/7, you need a uniform that takes care of you.





# BETTER BY DESIGN

## SUSTAINABILITY JOURNEY

Like you, we believe in the ethics of sustainability. So, when it comes to lessening our impact on the planet, we're committed to better.



**Better materials** created using recycled fabrics, rather than virgin resources. Like tunics containing recycled polyester from used bottles. And under scrubs made from recycled nylon.



**Better packaging** with polythene bags made from 100% recycled PET, and FSC-certified paper and card.



**Better partnerships**, with manufacturers, distributors and resellers who we trust to share our values.



# IT'S NOT ABOUT US IT'S ABOUT YOU

## **4-WAY STRETCH**

Our technical fabrics are engineered for flexibility, so you're free to flex, stretch and bend too.

## **BREATHABLE FABRICS**

The recycled polyester fibres let air circulate and wick away moisture, so you stay cool and comfortable.

## **LIGHTWEIGHT STYLES**

Our tunics and pants feel so light and comfortable, you'll forget you're even wearing a uniform.

## **BEAUTIFULLY PRACTICAL**

Our garments don't just look good, they have all practical features you need to perform at your best.

## **COLOUR CONFIDENCE**

A contemporary twist on classic colourways will make your team look a shade more professional.

## **EASY CARE**

Our high-quality garments are crease-resistant, designed to wash cold and look smarter for longer.





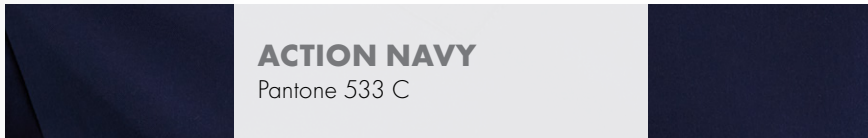
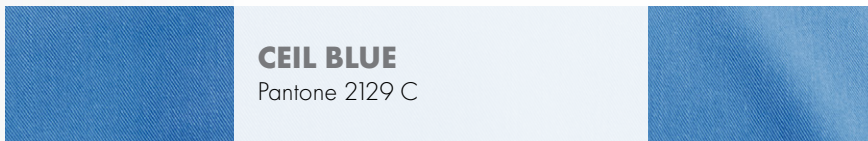
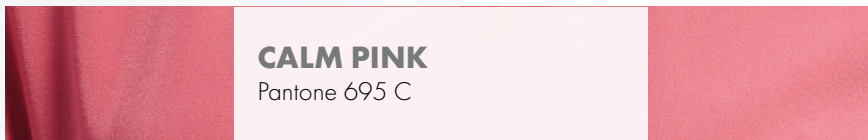
on  
na  
BY PREMIER





# THE LANGUAGE OF COLOUR

Sign post your team as the cutting edge professionals they are with our contemporary twist on classic colourways. Colour sets the tone of your workplace, so whether you're going for reassurance, precision or healing, we've got you covered.



Pantones are for guidance only.

on  
na  
BY PREMIER





NN300

## 'Limitless' Women's Onna-Stretch Tunic

V-neck style with left chest pocket and combined pen pocket. Breathable 4-way stretch for easy movement and all day comfort. Durable, crease resistant and easycare. Modern fit with back darts and side vents.

FABRIC: 42% Polyester, 33% Recycled Polyester, 19% Viscose, 6% Elastane, 210gsm

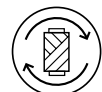
SIZES: XS - 3XL



4-WAY STRETCH



BREATHABLE



RECYCLED POLYESTER

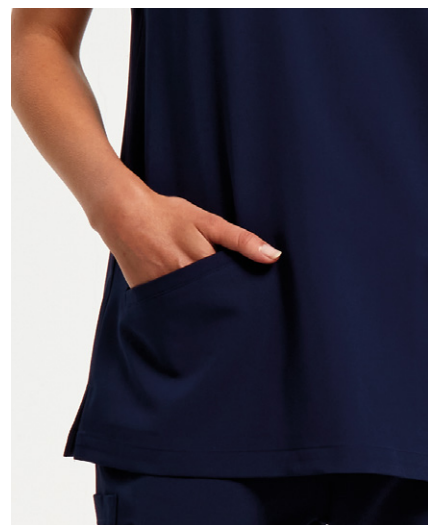


EASY-CARE



BRANDABLE





NN310

## 'Invincible' Women's Onna-Stretch Tunic

V-neck style with two front pockets. Breathable 4-way stretch for easy movement and all day comfort. Durable, crease resistant and easy care. Modern fit with back darts and side vents.

FABRIC: 42% Polyester, 33% Recycled Polyester, 19% Viscose, 6% Elastane, 210gsm

SIZES: XS - 3XL



EXACT BLACK

CALM PINK

DYNAMO GREY

ACTION NAVY

CEIL BLUE

CLEAN GREEN



4-WAY STRETCH



BREATHABLE



RECYCLED POLYESTER



EASY-CARE



BRANDABLE



NN600

## 'Relentless' Women's Onna-Stretch Cargo Pants

Breathable 4-way stretch for easy movement and all day comfort. Durable, crease resistant and easycare. Part elasticated waistband with drawcord and mock fly. Multiple mobile friendly coin and zip pockets. Hem vents for easy movement.

FABRIC: 42% Polyester, 33% Recycled Polyester, 19% Viscose, 6% Elastane, 210gsm

SIZES: XS - 3XL





4-WAY STRETCH



BREATHABLE



RECYCLED  
POLYESTER



EASY-CARE



BRANDABLE



NN610

## 'Energized' Women's Onna-Stretch Jogger Pants

Breathable 4-way stretch for easy movement and all day comfort. Durable, crease resistant and easycare. Elasticated waistband, drawcord and mock fly. Multiple mobile friendly and zip pockets. Ribbed knit cuffed ankles.

FABRIC: 42% Polyester, 33% Recycled Polyester, 19% Viscose, 6% Elastane, 210gsm

SIZES: XS - 3XL







4-WAY STRETCH



BREATHABLE



RECYCLED  
POLYESTER



EASY-CARE



BRANDABLE





NN200

## 'Limitless' Men's Onna-Stretch Tunic

V-neck style with left chest pocket and combined phone and pen pocket. Breathable 4-way stretch for easy movement and all day comfort. Durable, crease resistant and easycare. Modern fit with back darts and side vents.

FABRIC: 42% Polyester, 33% Recycled Polyester, 19% Viscose, 6% Elastane, 210gsm

SIZES: S - 3XL



DYNAMO GREY

CEIL BLUE

ACTION NAVY

CLEAN GREEN

EXACT BLACK



4-WAY STRETCH



BREATHABLE



RECYCLED POLYESTER



EASY-CARE



BRANDABLE



NN500

## 'Relentless' Men's Onna-Stretch Cargo Pants

Breathable 4-way stretch for easy movement and all day comfort. Durable, crease resistant and easycare. Buttoned waistband, drawcord and zip fly. Multiple mobile friendly coin and zip pockets. Hem vents for easy movement.

FABRIC: 42% Polyester, 33% Recycled Polyester, 19% Viscose, 6% Elastane, 210gsm

SIZES: S - 3XL



EXACT BLACK

DYNAMO GREY

ACTION NAVY

CEIL BLUE

CLEAN GREEN



4-WAY STRETCH



BREATHABLE



RECYCLED  
POLYESTER



EASY-CARE



BRANDABLE

# STRETCH



Contains 33% RCS Certified Recycled Post Consumer Polyester  
Certified by Control Union  
CU-CUC-119098



# on na

BY PREMIER



NN200



NN310



NN500



NN600



NN610



NN200



NN300 & NN370



NN270 & NN370



# STRONG





# FOUNDATIONS

## UNDERSCRUB BASE LAYERS

Designed to feel like a second skin, our base layers are engineered in breathable, performance fabrics that wick away perspiration. Keeping you warm and comfortable in winter. Helping you stay cool and dry in summer.

With a natural, plant-based mint deodorising finish, they will also protect your tunic from marks and stains, ensuring your uniform stays super fresh and spotless all year round. With Onna base layers, you really are unstoppable.





NN370

## 'Unstoppable' Women's Fresh Underscrub Base Layer

Peppermint extract gives a natural deodorising finish without a mint scent. Seamless body with unique jacquard pattern. Breathable 4-way stretch for easy movement and all day comfort. Durable, crease resistant and easycare.

FABRIC: 50% Recycled Nylon, 50% Nylon, 170gsm. \* 50% Recycled Nylon, 30% Nylon, 20% Polyester, 170gsm

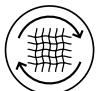
SIZES: XS - XL



4-WAY STRETCH



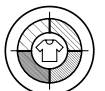
BREATHABLE



RECYCLED NYLON



DEODORISING MINT FINISH



BRANDABLE

# MINT FRESH



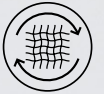
on  
na  
BY PREMIER



4-WAY STRETCH



BREATHABLE



RECYCLED  
NYLON



DEODORISING  
MINT FINISH



BRANDABLE





NN270

## 'Unstoppable' Men's Fresh Underscrub Base Layer

Peppermint extract gives a natural deodorising finish without a mint scent. Seamless body with unique jacquard pattern. Breathable 4-way stretch for easy movement and all day comfort. Durable, crease resistant and easycare.

---

FABRIC: 50% Recycled Nylon, 50% Nylon, 170gsm

---

SIZES: S - 2XL





# ACTIVE CARE WEAR

DESIGNED TO MOVE WITH YOU

Onna is Active Care Wear - designed specifically for on-the-go professionals. When you care for people 24/7 you need to know nothing will get in your way. We've engineered technical fabrics with 4-way stretch to let you flex; breathable fibres to keep you cool and easy-care fabrics to keep you looking good. Our 'Unstoppable' underscrubs with natural mint finish will keep you warm in winter, cool in summer and fresh all year round. We've included all the key features you need for ultimate practicality, like lots of pockets, drawstrings and elasticated waistbands.

Basically, we've put in the work, so you don't have to!



## SIZE GUIDE

### WOMEN'S STRETCH TUNICS & UNDERSCRUB: NN300, NN310, NN370

Call size	<b>XS</b>	<b>S</b>	<b>M</b>	<b>L</b>	<b>XL</b>	<b>2XL</b>	<b>3XL</b>
Chest to fit"	33-34	35-36	37-38	39-40	41-43	44-46	47-49
Chest to fit cm	84-86	89-91	94-96	99-101	104-109	112-117	121-124

### MEN'S STRETCH TUNIC & UNDERSCRUB: NN200, NN270

Call size	<b>S</b>	<b>M</b>	<b>L</b>	<b>XL</b>	<b>2XL</b>	<b>3XL</b>
Chest to fit"	37-39	40-42	43-44	45-47	48-49	50-53
Chest to fit cm	94-99	101-106	108-113	115-119	121-125	127-135

### WOMEN'S STRETCH CARGO & JOGGER PANTS: NN600, NN610

Call size	<b>XS</b>	<b>S</b>	<b>M</b>	<b>L</b>	<b>XL</b>	<b>2XL</b>	<b>3XL</b>
Waist to fit"	25-26	27-28	29-31	32-34	35-37	38-40	41-43
Waist to fit cm	63-67	68-72	74-79	81-86	89-94	96-101	105-109

### MEN'S STRETCH CARGO PANTS: NN500

Call size	<b>S</b>	<b>M</b>	<b>L</b>	<b>XL</b>	<b>2XL</b>	<b>3XL</b>
Waist to fit"	31-33	34-35	36-38	39-40	41-42	43-44
Waist to fit cm	79-84	86-89	91-96	99-101	104-107	110-114



PHYSIOTHERAPY  
 PHARMACY  
 CARE HOMES  
 DENTISTRY  
 VETERINARY  
 MEDICAL

on  
 na  
 BY PREMIER

BEAUTY  
 SALON & SPA  
 COSMETICS  
 AESTHETICS  
 CHILDCARE  
 HOUSEKEEPING