


PREMIER[®]
UNIFORMS THAT WORK FOR YOU

BEAUTY

& SALONWEAR



BEAUTY TUNICS . TABARDS . APRONS . POLO SHIRTS . HEALTHCARE



CONTENTS

YOUR TIME TO SHINE

When clients attend their beauty and well-being appointments, they expect to be greeted by well-presented staff.

Discover a collection of stunning beauty tunics to help elevate your look, along with essential waterproof styles and suitable choices for healthcare professionals.

Beauty Tunics & Trousers	4 - 9
Aprons & Gowns	10 - 15
Tabards	16 - 19
Polo Shirts	20 - 23
Casual Tees	24 - 25
Healthcare	26 - 27

Front cover:

Models wear PR683 'Blossom' Beauty Tunic, page 5

Featured right:

Models wear PR683 'Blossom' Beauty Tunic, page 5

Back cover:

Models wear PR682 'Orchid' Beauty Tunic, page 6



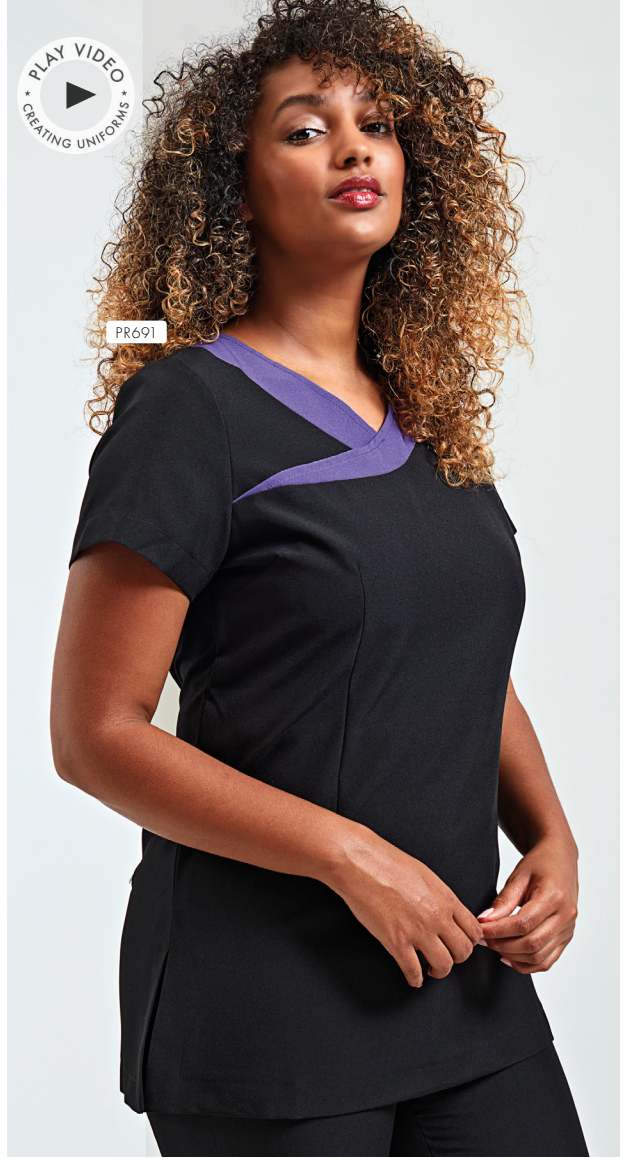




PR686



PR691



Camellia

PR686 Feature Zip Tunic

- Flattering feminine fit with bust and back darts, Cross over neckline, Pull-on style with front feature zip
- 100% Polyester, 185gsm
- Sizes: **2XS/6 – 5XL/24**
- 1 colour

BLACK & BLACK



Ivy

PR691 Contrast Neck Tunic

- Flattering feminine fit with bust and back darts, Crossover neckline with contrast coloured trim, Pull-on style with back zip fastening
- 100% Polyester, 185gsm
- Sizes: **2XS/6 – 5XL/24**
- 4 colours

STRAWBERRY RED & BLACK

HOT PINK & BLACK

PURPLE & BLACK

TURQUOISE & BLACK



EASY CARE





PR683

PREMIER[®]

UNIFORMS THAT WORK FOR YOU

Blossom

PR683 Asymmetric Button Tunic ■

Flattering feminine fit with bust and back darts, Mandarin collar, Concealed zip through fastening and press stud ■ 100% Polyester, 185gsm ■ Sizes: **2XS/6** – **5XL/24** ■ 7 colours



EASY CARE

Orchid



12

Colours

PR682 Beauty & Spa Tunic ■ Flattering feminine fit with bust and back darts, Mandarin collar, Eight 'bar' button fastening ■ 100% Polyester, 185gsm ■ Sizes: **2XS/6 – 5XL/24** ■ 12 colours



PR682





PR681

Rose

PR690 Wrap Satin Trim Tunic

- Flattering feminine fit with bust and back darts, Satin trim creating the illusion of a wrap tunic, Pull-on style with back zip fastening
- 100% Polyester, 185gsm
- Sizes: **2XS/6 – 5XL/24**
- 1 colour



Mika

PR681 Feature Button Tunic

- Flattering feminine fit with bust and back darts, Four sparkly feature buttons embellished on the trim, Pull-on style with back zip fastening
- 100% Polyester, 185gsm
- Sizes: **2XS/6 – 5XL/24**
- 1 colour



STRAIGHT
FIT

PR536



PR688



Iris

PR536 Women's Straight

Leg Trousers

▪ Trousers with a deep waistband, YKK fastening zip, Cross over waistband with two button fastening ▪ 100% Polyester, 185gsm ▪

Sizes: **XS/8** – **5XL/24**, Regular leg 31"/79 cm, *Long leg 34"/86 cm

▪ 3 colours



Viola

PR688 Linen-Look V-Cut

Beauty Tunic

▪ Open pockets to the sides, Round neck with v-cut, Concealed zip back ▪ 100% Polyester, 160gsm ▪ Sizes: **XS/8** – **5XL/24** ▪ 2 colours



EASY
CARE

Verbena

PR685 Linen-Look Button-Up

Beauty Tunic ■ Banded style collar, Buttoned placket, Three quarter sleeves ■ 100% Polyester, 160gsm ■ Sizes: **XS/8** – **5XL/24** ■ 2 colours



LINEN-LOOK FABRIC



HEATHER GREY



HEATHER BLACK



PR685



'COLOURS COLLECTION' BIB APRON

PR150 'Colours Collection' Bib Apron

Adjustable buckle on neckband, Self-fabric ties,
 Two sizes available ■ 65% Polyester, 35% Cotton,
 195gsm. Denim: 70% Cotton, 30% Polyester, 265gsm
 ■ Size: 86cm x 72cm

*Extra large size: 102cm x 91cm
 (Black and White only)



Styled with PR683 'Blossom' Beauty Tunic, page 5

62

Colours



PR150



10

Colours



2 IN 1 APRON

PR159 'Colours Collection' 2-in-1 Apron ■ One apron worn two ways, Bib and waist apron styles, Pocket features on both styles ■ 65% Polyester, 35% Cotton, 195gsm ■ 10 colours



Can be worn as a bib apron, doubles over and neck ties are secured away to form a waist apron.



IN THE SALON

PR683



PR536



PR682



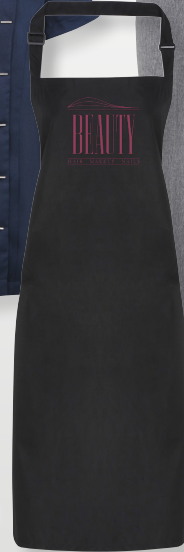
PR536



PR698



PR115



& AT THE BARBER'S!

PR615



PR123

PR560



PR630



PR126

PR560



PR219



PR136

PR560



Salon Essentials



WATERPROOF

BLEACH
RESISTANT

PR115 Waterproof Bib Apron ■ Adjustable buckle on neckband, Waterproof and bleach resistant, 90cm self fabric ties ■ 100% Polyester with Polyurethane coating, 110gsm ■ 8 colours



PR116 Waterproof Salon Gown ■ Suitable for salons and barbers, 145cm long by 123cm wide, Waterproof and bleach resistant, Adjustable tear release fastening at the back ■ 100% Polyester with Polyurethane coating, 110gsm ■ 2 colours



Waterproof, bleach resistant salon gowns

PR117 Long Sleeve Waterproof Salon Gown ■ Waterproof and bleach resistant for use in salons and barbers, Elasticated cuffs, Adjustable tear release fastening ■ 100% Polyester with Polyurethane coating, 110gsm ■ 1 colour



WATERPROOF WRAP AROUND TUNIC

PR174 Waterproof Wrap Around Tunic ■ Waterproof and bleach resistant, V-neck styling, Double centre pocket, Flattering feminine fit measuring 86cm in length ■ 100% Polyester with Polyurethane coating, 110gsm ■ Sizes: **S-M**/10-12, **L-XL**/14-16 ■ 4 colours



'TULIP' WRAP AROUND TUNIC

PR177 'Tulip' Wrap-Around Tunic ■ Over-the-head style, V-neck styling, Centre patch pocket ■ 100% polyester, 185gsm ■ Sizes: **S-M**/10-12, **L-XL**/14-16 ■ 4 colours

FASTENING TIP

Bring the ties from back to front and tie round your waist on the underside, then take front ties and fasten at the back.



PR177



TABARDS

PR172 Long Length Pocket Tabard ■ Pull-on coverall with a length of 78cm, Side tabs with adjustable press stud fastening, Centre pocket ■ 65% Polyester, 35% Cotton, 195gsm
■ Sizes: **S/10** – **XL/16** ■ 3 colours



PR 172

BLACK

NAVY

ROYAL

85°

PR171 Pocket Tabard ■ Pull-on coverall with a length of 68cm, Side tabs with adjustable press stud fastening, Centre pocket ■ 65% Polyester, 35% Cotton, 195gsm
 ■ Sizes: **S/10 – 3XL/20** ■ 18 colours



18

Colours

PR171





COOLCHECKER® POLO SHIRTS

Coolchecker® Pique Polo Shirt ■ Side panels for fitted shape, Moisture management wicking fabric, Three button placket, Ribbed knit collar and cuffs ■ 100% Polyester pique knit, 155gsm, 25 colours

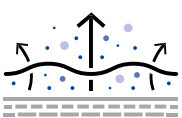
PR615 Men's sizes: S/35" – *5XL/51"

PR616 Women's sizes: XS/8 – 2XL/18

*only available in selected colours

COOL

CHECKER®



- Allows air flow through fabric
- Drawing moisture away from the body
- Fast dry and crease resistant

MODERN
FIT



25

Colours



PR615

PR616

16

Colours



PR630

PR632



PERFORMANCE POLO SHIRTS

Coolchecker® Plus Pique Polo - Coolplus® ■ Double pique knit for heavier construction, Coolplus® wicking yarn for breathability, Ribbed knit collar and cuffs, Three button placket, Snag and crease resistant, Silvadur™ technology for antimicrobial properties

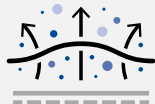
■ 100% Coolplus® Polyester Pique, 185gsm, 16 colours.

PR630 Men's sizes: **S/35"** – ***6XL/59"** **PR632** Women's sizes: **XS/8** – ****4XL/22**

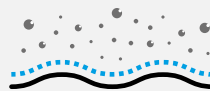
*and **only available in selected colours



Air
flows through the fabric



Moisture
drawn away from skin



Fabric
that uses surface dimensional
channel technology.



antimicrobial
which releases silver ions that
destroy the bacteria that
causes odour, material
degradation and discolouration.

'COMIS' COTTON-RICH TEE

These styles represent our commitment to buying cotton through the Better Cotton™ initiative.

'Comis' Cotton-Rich Tee ■ Narrow banded collar, placket with single mental button, soft feel
■ 60% Cotton, 40% Recycled Polyester, 160gsm. **Grey Marl:** 90% Cotton, 10% Viscose, 160gsm, 5 colours

PR219 Men's sizes: **S/34" – 3XL/54"**

PR319 Women's sizes: **XS/8 – 2XL/18**



† Grey Marl does not contain recycled polyester





PR219



PR319



Healthcare Uniforms

PR605 'Daisy' Healthcare Tunic ■ V-neck styling, Concealed zip fastening with press stud, Two curved front pockets, Contrast trim on neckline, sleeves and pockets ■ 65% Polyester, 35% Cotton, 195gsm ■ Sizes: **XS/8** – **5XL/24** ■ 2 colours



PR514 'Poppy' Healthcare Trousers ■ Cross over waistband with two button fastening, Zip fly, Belt loops, Two slanted front pockets ■ 65% Polyester, 35% Cotton, 195gsm ■ Sizes: **XS/8** – **5XL/24** ■ 1 colour



PR514



PR604 'Vitality' Healthcare Tunic ■ Soft collar styling, Concealed zip fastening and press stud, Two slanted front pockets, Contrast trim on neckline, sleeves and pockets ■ 65% Polyester, 35% Cotton, 195gsm ■ Sizes: **XS/8 – 5XL/24** ■ 3 colours



PR604





BEAUTY TUNICS
TABARDS
APRONS

POLO SHIRTS
CASUAL TEES
HEALTHCARE

